



IMPERIAL PORCELAIN  
MANUFACTORY

—\*—  
1744

TOP  
-OF-  
THE BEST  
CATALOG

SINCE 1744  
IN SAINT-PETERSBURG

## INDEX

HISTORY	04
MANUFACTURING PROCESS	06
COBALT NET COLLECTION	08
COBALT NET HISTORY	10
COBALT COLLECTION	24
WHITE GOLD COLLECTION	34
TRADITIONAL COLLECTION	48
ANIMALISTIC SCULPTURE	56
RUSSIAN STYLE COLLECTION	60
ARTISTIC HAND-PAINTED COLLECTION	64





Empress Elizabeth

04

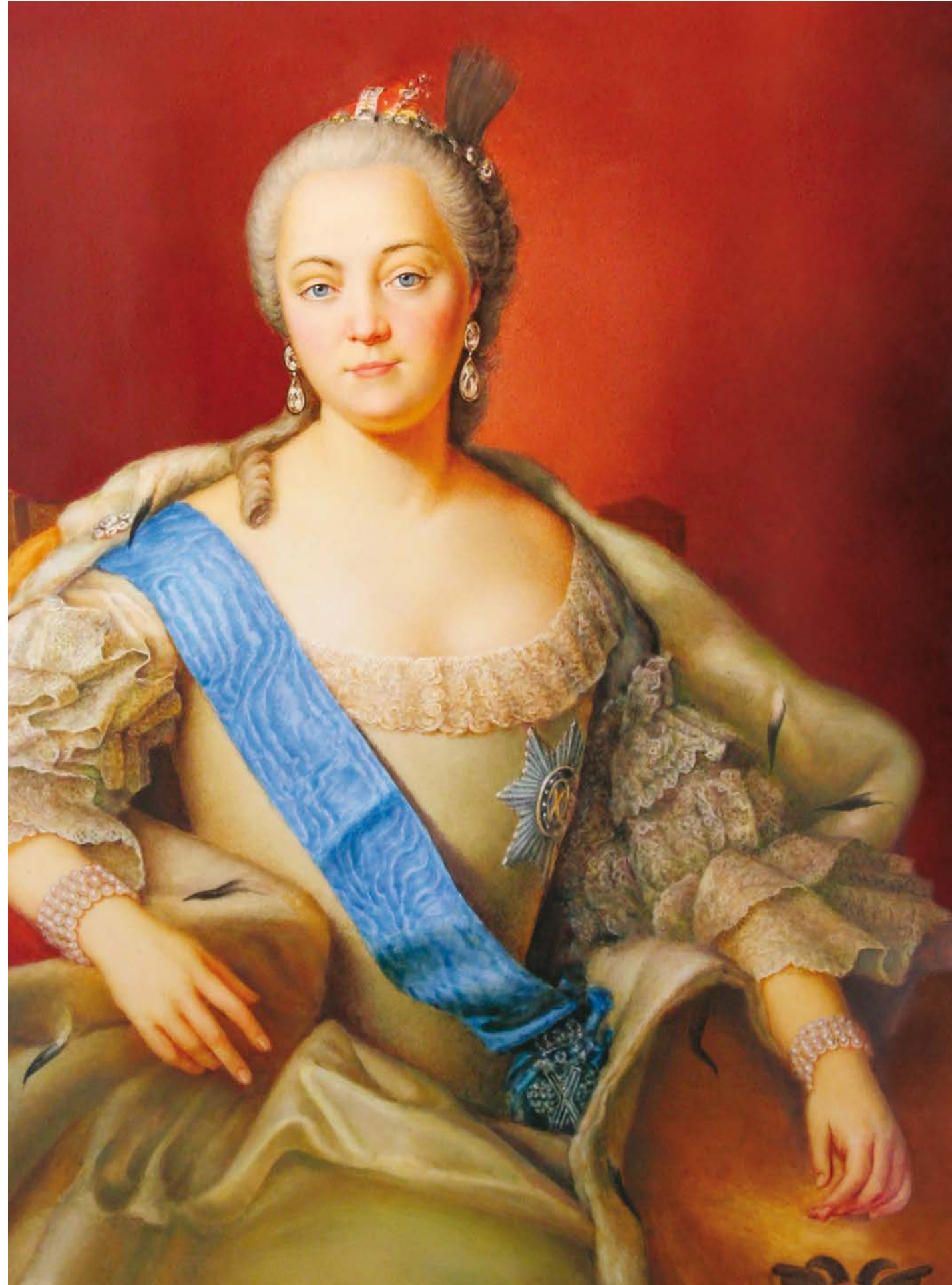
## HISTORY

**1744** Established in 1744 in Saint Petersburg by order of Empress Elizabeth, the daughter of Peter the Great, the Imperial Porcelain Manufactory became the first porcelain company works in Russia and the third one in Europe.

**1762–1801** Upon enthronement of Catherine II (1762–1796), the manufactory was reorganized and renamed the Imperial Porcelain Manufactory in 1765. From then onward, it was to «satisfy the needs of entire Russia in porcelain». The end of the XVIII century is considered to be the Golden Age of Russian porcelain. The Imperial Porcelain Manufactory was one of European leaders. With such grand dinner sets as Arabeskovy, Yakhtinsky and Kabinetsky numbering up to a thousand items, the Imperial Porcelain Manufactory reached the pinnacle of fame.

**1801–1825** During the reign of Alexander I (1801–1825), the Russian porcelain not only glorified the deeds of the Emperor but also conveyed national ideas and attitudes. For example, Guryevsky dinner set is an ode to the people who won the Patriotic War of 1812. Vases played a special part in the manufactory output from the early years of Alexander I's reign and till the 1860s. Gold became one of the favorite decorative materials, while landscapes and battle scenes dominated painting.

**1825–1894** The Imperial Porcelain Manufactory provided almost all St. Petersburg palaces with its dinner sets during the reign of Alexander I and Nicholas I. The replicas are notable



IMPERIAL PORCELAIN MANUFACTORY

SINCE  
1744Manufactory  
since 1744

for their striking accuracy and refinement. The palette of pure and brilliant colours is in perfect accord with the originals. At the same time, portrait, icon and miniature painting on vases and panels also gained momentum. The awards of world fairs in London, Paris and Vienna proved the leadership of IPM in porcelain painting. The Imperial Porcelain Manufactory celebrated its 100th anniversary by establishing its own museum in 1844.

«revolutionary in content, perfect in its shape and flawless in workmanship».

### PRE-WAR PERIOD

The Leningrad Porcelain Manufactory was the first in the USSR to open the art laboratory in 1930s when the Soviet culture started forming. The creative team headed by Nikolay Suetin, an apprentice of Kazimir Malevich, invented the new Soviet porcelain style in tune with the «socialist way of life».

### 1894–1912

Owing to the technical innovations developed earlier, the Imperial Porcelain Manufactory reached top performance during the reign of Nicholas II (1894–1917), the last Emperor of Russia. Rich art technique is an infinite source of pride of the IPM which gave birth to the acid-proof and electrical porcelain during World War I.

### AFTER WORLD WAR II

The Khrushchev's Thaw of the 1960s revived such art slogans of the 1920s as «Bring art to everyday life» and «Bring art to production environment». After the pompousness and excessive decoration typical of the Stalin's period, the interest in white porcelain, laconic design and simple shape was rekindled.

### 1920

The Imperial Porcelain Manufactory was nationalized and renamed the State Porcelain Manufactory in 1918. It came under the control of the People's Commissariat for Education which set a task to turn the former Imperial Manufactory into the «republican pilot laboratory of ceramics», where «propaganda porcelain in the highest sense of this word» would be made,

### OUR TIME

Respect for heritage coupled with continuous development and regular renovation of artistic traditions is still a hallmark of St. Petersburg porcelain school. Each of our artists found their own style in the art of porcelain, contributing to the decorative diversity and emotional vividness of the Imperial Porcelain Manufactory products.



## MANU- FACTURING PROCESS

The Imperial Porcelain Manufactory offers about 4 000 products varying in shapes and patterns: tea, coffee and dinner sets, individual tableware, gifts and souvenirs, genre and animal sculptures, decorative dishes, plates, etc. They are made of hard-paste, soft-paste and bone porcelain.

The porcelain manufacturing process is rather complex. For example, up to 80 process steps are required to make a cup. The Imperial Porcelain Manufactory preserved the essence of the classic porcelain technology developed by D. I. Vinogradov, the founder of Russian porcelain industry, as early as the 18th century. The 'soft' porcelain formula was developed at the Manufactory in the early 19th century by famous chemist Nikolai Kachalov. Fine bone china is remarkable for its high degree of whiteness, delicacy, and lightness, similar by its characteristics to the renowned ancient Chinese porcelain known as 'eggshell'. The Imperial Porcelain Manufactory developed the egg-shell bone porcelain technology 50 years ago and was the first in Russia to release the commercial batch of articles of increased fineness and transparency.

The Imperial Porcelain Manufactory products are decorated with hand or machine-made overglaze and underglaze painting, or a combination of these, with paints based on rare and precious metals.



The Imperial Porcelain Manufactory is world-famous for its sophisticated hand-made painting. A wide range of articles is decorated with natural gold and engraved pictures. The majority of tableware, vases and almost all animal sculptures are underglazed. Owing to one of our most popular combinations - deep underglaze cobalt coupled with bright overglaze colour and gold, the eye-catching products of the IPM look especially spectacular.

HAND MADE SUPER HIGH QUALITY



The success of the Imperial Porcelain Manufactory's products is a big merit of their creators: sculptors and painters. The Manufactory's creative team today includes well-known names in the world of porcelain, such as Associate Member of the Russian Academy of Arts and Distinguished Artist of Russia Inna Olevskaya, Distinguished Artists of Russia Tatyana Afanasieva, Nelya Petrova, and Galina Shulyak, artists Tatiana Chapurgina, Sergei Sokolov, Tatiana Charina and Nina Troitskaya. These names are supplemented by the names of talented young artists who continue to develop the glorious traditions of the St. Petersburg school of porcelain. Many works applied art produced at the factory are exclusive: hand-made and one-of-a-kind.



The Imperial Porcelain Manufactory managed to preserve such unique technologies as cobalt covering and underglaze landscape painting that date back to the end of the XIX century.

A new casting and moulding workshop with high-technology equipment is expected to be launched in the short run. The IPM successfully applies advanced 3D modelling technology to accelerate mould development process and, as a result, offer you an increasing number of new products.



## COBALT NET COLLECTION

This set – elegant golden blue ornament against the white background – thanks to a well-found accurate rhythm, unusual subtlety of lines and the color balance has become a “hallmark” of the factory over the years. Anna Yatskevitch, the author of design, has based her painting on the motifs of the first service from porcelain creator — D.I. Vinogradov, which he produced for Empress Elizaveta Petrovna in the 1750s.

Over time, the “Cobalt Net” pattern has become not only a hallmark of the first porcelain factory in Russia, but also the symbol of the city, the picture of the classical St. Petersburg’s style. The service with the legendary painting is represented in the collections of the largest museums in Russia and abroad.

### ST. PETERSBURG HALLMARK

Symbol of the city on the Neva River, the embodiment of the classical St. Petersburg’s style

### TIMELESS DESIGN

Form and decor harmonious combination

### EXCLUSIVE TECHNOLOGY

Rich cultural heritage, unique techniques of porcelain making, the highest professionalism

### WIDE PRODUCT RANGE

Variety of designs based on the legendary painting





# COBALT NET HISTORY

In Leningrad, during the time of war, artist Anna Yatskevitch (1904–1952) created painting of the service “Cobalt Net” in 1944 for the 200th anniversary of the manufactory establishment, which at that time was known as the National Porcelain Factory named after Lomonosov. “Cobalt Net” on the shape of the “Tulip” service, created in 1936 by the sculptor S.E. Yakovleva is replicated at the factory since 1950. In 1958, at the first post-war World Exhibition in Brussels “EXPO'58”, set service was awarded the Gold Medal for the harmonious combination of the form and painting. In 1996–1999, the artist of the factory, G.D.Shulyak, Honoured Artist of the Russian Federation, created the painting of dining and gift items. Later, the painting was adapted for the objects made from thin-walled bone china. Now the “Cobalt Net” service has grown to a multi-set ensemble including more than 100 items.







Tea set  
Cobalt net 6/20 – 6/14  
Shape: Tulip  
**81.11141.03.1 / 81.20942.00.1**



Vase  
Cobalt net  
Shape: Youth, 180 ml  
**80.07113.00.1**



Vase  
Cobalt net  
Shape: Youth, 155x268x268  
**80.06937.00.1**



Vase  
Cobalt net  
Shape: Youth, 103x203x20  
**80.06938.00.1**



Horseradish box  
Cobalt net  
Shape: Youth, 200 ml  
**80.06946.00.1**



Cup with saucer  
Cobalt net  
Shape: Tulip, 250 ml  
**81.10105.00.1**



Cup with saucer  
Cobalt net  
Shape: Tulip, 140 ml  
**81.10106.00.1**



3 pieces set  
Cobalt net  
Shape: Tulip, 140 ml  
**81.10104.00.1**



Coffee pot  
Cobalt net  
Shape: Tulip, 1200 ml  
**80.00233.00.1**



Tea pot  
Cobalt net  
Shape: Tulip, 2000 ml  
**80.00232.00.1**



Sugar bowl  
Cobalt net  
Shape: Tulip, 450 ml  
**80.00234.00.1**



Tea pot  
Cobalt net  
Shape: Tulip, 600 ml  
**80.00231.00.1**



Coffee set  
Cobalt net 6/20  
Shape: Tulip  
**81.20944.00.1**



Cake Dish  
Cobalt net  
Shape: Tulip, 48x215  
**80.00236.00.1**



Jam saucer  
Cobalt net  
Shape: Tulip, 98 mm  
**80.50397.00.1**



Bowl  
Cobalt net  
38x180x180  
**80.03876.00.1**



Vase  
Cobalt net  
Shape: Tulip, 325 ml  
**80.04258.00.1**



Mug with saucer  
Cobalt net  
Shape: Leningrad, 360 ml  
**81.13955.00.1**



Herbal mug  
Cobalt net  
Shape: Snowy morning, 380 ml  
**81.15425.00.1**



Creamer  
Cobalt net  
Shape: Tulip, 350 ml  
**80.00235.00.1**



Creamer  
Cobalt net  
Shape: Tulip, 205 ml  
**80.02187.00.1**



Candlestick 3 candles  
Cobalt net  
Shape: Tulip,  
**80.07627.00.1**



Vase  
Cobalt net  
Shape: Tulip, 360 ml  
**80.04257.00.1**



Covered cup with saucer tea  
Cobalt net  
Shape: Gift №2, 250 ml  
**81.15419.00.1**



Tea box  
Cobalt net  
Shape: Ring, 350 ml  
**80.59156.00.1**





## COBALT NET 6/20

TEA SET. SHAPE: SPRING



Tea set  
Cobalt net 6/20  
Shape: Spring  
**81.21814.00.1**



3 pieces set  
Cobalt net  
Shape: Spring, 250 ml  
**81.21844.00.1**



Tea cup with saucer  
Cobalt net  
Shape: Spring, 250 ml  
**81.19918.00.1**



Sugar bowl  
Cobalt net  
Shape: Spring, 400 ml  
**80.75344.00.1**



Tea pot  
Cobalt net  
Shape: Spring, 800 ml  
**80.75343.00.1**



Tea cup with saucer  
Cobalt net  
Shape: Solo, 100 ml/14 sm  
**81.14623.00.1**



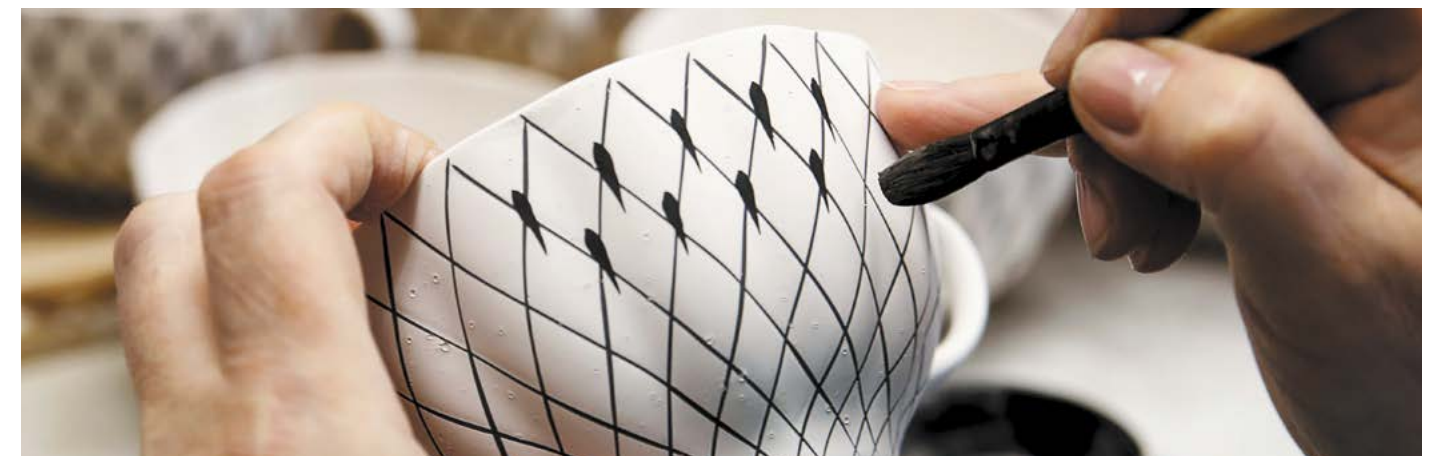
Tea cup with saucer  
Cobalt net  
Shape: Solo, 220 ml/15 sm  
**81.25199.00.1**



Tea cup with saucer  
Cobalt net  
Shape: Solo, 300 ml/16 sm  
**81.15419.00.1**



Gift set  
Cobalt net  
Shape: Solo  
**81.25615.00.1**







Dinner set  
Cobalt net 6/24  
Shape: Youth  
**81.20945.00.1**



Salad bowl 1 person  
Cobalt net  
Shape: Youth, 170 ml  
**80.06934.00.1**



Salad bowl 2 person  
Cobalt net  
Shape: Youth, 350 ml  
**80.06935.00.1**



Salad bowl 4 person  
Cobalt net  
Shape: Youth, 700 ml  
**80.06936.00.1**



Salad bowl 6 person  
Cobalt net  
Shape: Youth, 1500 ml  
**80.09899.00.1**



Plate small  
Cobalt net  
Shape: Smooth, 180 mm  
**80.08689.00.1**



Plate small  
Cobalt net  
Shape: Smooth, 200 mm  
**80.07243.00.1**



Plate small  
Cobalt net  
Shape: Smooth, 270 mm  
**80.03833.00.1**



Round dish  
Cobalt net  
Shape: Youth, 300 mm  
**80.06933.00.1**



Plate small  
Cobalt net  
Shape: Tulip, 150 mm  
**80.00229.00.1**



Plate small  
Cobalt net  
Shape: Tulip, 180 mm  
**80.00230.00.1**



Plate small  
Cobalt net  
Shape: Tulip, 200 mm  
**80.50060.00.1**



Plate small  
Cobalt net  
Shape: Tulip, 270 mm  
**80.00533.00.1**



Plate small  
Cobalt net  
Shape: European №2, 200 ml  
**80.85300.00.1**



Plate small  
Cobalt net  
Shape: European №2, 215 mm  
**80.85299.00.5**



Plate small  
Cobalt net  
Shape: European №2, 270 mm  
**80.85297.00.5**



Plate small  
Cobalt net  
Shape: Flat, 240 mm  
**80.03647.00.1**



Butter dish with cover  
Cobalt net  
Shape: Rectangular, 100x172x155  
**80.09992.00.1**



Salad bowl 2 person round  
Cobalt net  
Shape: Alexandria, 280 ml  
**80.66567.00.1**



Salad bowl 6 person  
Cobalt net  
Shape: Alexandria, 1500 ml  
**80.66568.00.1**



Cup with saucer  
Cobalt net  
Shape: Youth, 170 ml  
**81.13919.00.1**



Decorative plate Deep  
Cobalt net  
Shape: Deep, 220 mm  
**80.09951.00.1**



Oval dish for fish  
Cobalt net  
Shape: Youth, 240 mm  
**80.07112.00.1**



Oval dish  
Cobalt net  
Shape: Youth, 280 mm  
**80.06932.00.1**



Oval dish  
Cobalt net  
Shape: Youth, 350 mm  
**80.07111.00.1**



Box of caviar  
Cobalt net  
Shape: Caspian  
**80.72957.00.1**



Napkin ring  
Cobalt net  
Shape: Youth  
**80.07021.00.1**



Shot glass  
Cobalt net  
Shape: Slavic, 50 ml  
**80.07115.00.1**



Spices set  
Cobalt net  
Shape: Youth  
**81.19207.00.1**





Vase  
Cobalt net  
Shape: Cylindre, 1200 ml  
**80.07398.00.1**



Decanter  
Cobalt net  
Shape: Cylindre, 600 ml  
**80.04667.00.1**



Vase  
Cobalt net  
Shape: Empire, 1260 ml  
**80.50293.00.1**



Vase  
Cobalt net  
Shape: Flower, 1480 ml  
**80.74815.00.1**



Cutting board for cheese  
Cobalt net  
14x335x182  
**80.01580.00.1**



Candlestick Bud  
Cobalt net  
117 mm  
**80.06952.00.1**



Decorative spoon  
Cobalt net  
Shape: Souvenir, 30x190x65  
**80.01581.00.1**



Egg middle size of stand  
Cobalt net  
Shape: 132 mm  
**80.07117.00.1**



Thimble  
Cobalt net  
Shape: Helmet, 24x22  
**80.09557.00.1**



Jewelry box  
Cobalt net  
Shape: Oval, 140 ml  
**80.01588.00.1**



Vase  
Cobalt net  
Shape: Youth, 69 mm  
**80.07114.00.1**



Gift set  
Cobalt net  
Shape: European №2, 270 mm  
**81.25610.00.1**



Cup with saucer  
Net-Modern  
Shape: Tulip, 250 ml  
**81.25199.00.1**



Gravy boat  
Cobalt net  
Shape: Youth, 100 gr  
**80.07109.00.1**



Gravy boat  
Cobalt net  
Shape: Youth, 200 gr  
**80.06940.00.1**



Gravy boat  
Cobalt net  
Shape: Youth, 400 gr  
**80.07438.00.1**



## BONE CHINA PORCELAIN COLLECTION





Tea set  
Cobalt net 6/14  
Shape: Julia  
**81.26236.00.1**



Cup with saucer  
Cobalt net  
Shape: Julia, 210 ml  
**81.26235.00.1**

Coffee pot  
Cobalt net  
Shape: Julia, 690 ml  
**80.66466.00.1**

Sugar bowl  
Cobalt net  
Shape: Julia, 310 ml  
**80.66467.00.1**

Creamer  
Cobalt net  
Shape: Julia, 120 ml  
**80.66468.00.1**



Coffee set  
Cobalt net 6/15  
Shape: Julia  
**81.19482.00.1**



Cup with saucer  
Cobalt net  
Shape: Julia, 145 ml  
**81.20119.00.1**

Coffee pot  
Cobalt net  
Shape: Julia, 690 ml  
**80.66466.00.1**

Sugar bowl  
Cobalt net  
Shape: Julia, 310 ml  
**80.66467.00.1**

Creamer  
Cobalt net  
Shape: Julia, 120 ml  
**80.66468.00.1**



Tea set  
Cobalt net 6/14  
Shape: Cupola  
**81.21513.00.1**



Tea pot  
Cobalt net  
Shape: Cupola, 1400 ml  
**80.72836.00.1**

Tea cup with saucer  
Cobalt net  
Shape: Cupola, 300 ml  
**81.18456.00.1**

Sugar bowl  
Cobalt net  
Shape: Cupola, 300 ml  
**80.72837.00.1**



Tea set  
Cobalt net 6/20 – 6/14  
Shape: Wave  
**81.20893.00.1 / 81.20894.00.1**

Tea cup with saucer  
Cobalt net  
Shape: Wave, 155 ml  
**81.14575.00.1**



3 pieces set  
Cobalt net  
Shape: Wave, 155 ml  
**81.15669.00.1**

Sugar bowl  
Cobalt net  
Shape: Wave, 390 ml  
**80.06535.00.1**

Cup with saucer  
Cobalt net  
Shape: Black coffee, 80 ml  
**81.14569.00.1**

Cup with saucer  
Cobalt net  
Shape: May, 165 ml  
**81.14574.00.1**





## HOME COLLECTION

COBALT NET



Set vodka shot  
Cobalt net  
6 pieces, 30 ml  
**14.00026.07**



Set vodka shot  
Cobalt net  
6 pieces, 60 ml  
**14.00002.07**



Set whiskey glassess  
Cobalt net  
6 pieces, 250 ml  
**14.00024.07**



Set juice glassess  
Cobalt net  
6 pieces, 300 ml  
**14.00025.07**



Set water glasses  
Cobalt net  
6 pieces, 570 ml  
**14.00004.07**



Set cognac glasses  
Cobalt net  
6 pieces, 550 ml  
**14.00003.07**



Set champagne glasses  
Cobalt net  
6 pieces, 200 ml  
**14.00005.07**



Set wine glasses  
Cobalt net  
6 pieces, 390 ml  
**14.00001.07**



Decanter with lid  
Cobalt net  
**14.01058.07**



Decanter blue lid  
Cobalt net  
1000 ml  
**14.00027.07**



Jug  
Cobalt net  
1000 ml  
**14.00064.07**



Set cocktail glasses  
Cobalt net  
6 pieces, 150 ml  
**14.00023.07**



Gift Set  
Cobalt net blue  
Napkin 45 x 45  
**14.01109.02**



Gift Set  
Cobalt net blue  
Tablecloth 180 x 230 / 180 x 180  
**14.01106.02 / 14.01105.02**



Table set  
Consul 6/24  
**14.11000.01**



Table set  
The Emperor 6/24  
**14.12000.01**



## COBALT COLLECTION

The Cobalt collection brings together three classic colors - blue, white and gold. It creates an amazing combination of intertwining lines, drops and accents. The collection includes a variety of different products: coffee and tea sets, dinner sets, as well as separate items. Each individual piece is hand painted by the manufactory's skilled artists who carefully keep the traditions of porcelain making.

### TRADITIONAL COMBINATION

Deep underglaze cobalt coupled with natural gold

### HIGH QUALITY

The IPM successfully gained quality system certification in accordance with international standards

### VARIETY OF DECORATION

Expression and beauty are in details







Tea set  
Bridesmaid 6/20  
Shape: Radial  
**81.14534.01.1**



3 pieces set  
Bridesmaid  
Shape: Radial, 250 ml  
**81.10302.00.1**



Tea pot  
Bridesmaid  
Shape: Radial, 750 ml  
**80.00656.00.1**



Tea cup with saucer  
Bridesmaid  
Shape: Radial, 250 ml  
**81.10303.00.1**



Covered cup with saucer tea  
Bridesmaid  
Shape: Gift №2, 250 ml  
**81.14350.00.1**



Tea set  
Forget me not 6/20  
Shape: Radial  
**81.14821.01.1**



Tea cup with saucer  
Forget me not  
Shape: Radial, 250 ml  
**81.10305.00.1**



Tea pot  
Forget me not  
Shape: Radial, 750 ml  
**80.04087.00.1**



3 pieces set  
Forget me not  
Shape: Radial, 250 ml  
**81.10304.00.1**



Covered cup with saucer tea  
Forget me not  
Shape: Gift №2, 250 ml  
**81.14347.00.1**



Tea set  
Russian domes 6/14  
Shape: Radial  
**81.15203.03.1**



Creamer  
Russian domes  
Shape: Radial, 220 ml  
**80.01805.00.1**



Tea pot  
Russian domes  
Shape: Radial, 750 ml  
**80.01484.00.1**



Tea cup with saucer  
Russian domes  
Shape: Radial, 250 ml  
**81.13809.00.1**



3 pieces set  
Russian domes  
Shape: Radial, 250 ml  
**81.13931.00.1**



Vase  
Russian domes  
Shape: Radial, 193 ml  
**80.06303.00.1**



Tea cup with saucer  
The bird-queen  
Shape: Tulip, 250 ml  
**81.10122.00.1**



Herbal mug  
Souvenir  
Shape: Snowy morning, 380 ml  
**81.14830.00.1**





Tea set  
Winding twig 6/20  
Shape: Tulip  
**81.11152.06.1**



Coffee cup with saucer  
Winding twig  
Shape: Tulip, 140 ml  
**81.10109.00.1**



Tea pot  
Winding twig  
Shape: Tulip, 600 ml  
**80.04050.00.1**



Tea cup with saucer  
Winding twig  
Shape: Tulip, 250 ml  
**81.10110.00.1**



Cake Dish  
Winding twig  
Shape: Tulip  
**80.00245.00.1**



Mug with saucer  
Winding twig  
Shape: Leningrad, 360 ml  
**81.13920.00.1**



3 pieces set  
Winding twig  
Shape: Tulip, 250 ml  
**81.11210.00.1**



Sugar bowl  
Winding twig  
Shape: Tulip, 450 ml  
**80.00243.00.1**



Creamer  
Winding twig  
Shape: Tulip, 350 ml  
**80.00244.00.1**



Tea cup with saucer  
Ripples  
Shape: Tulip, 250 ml  
**81.15426.00.1**



Tea pot  
Ripples  
Shape: Tulip, 600 ml  
**80.06545.00.1**



3 pieces set  
Ripples  
Shape: Tulip, 250 ml  
**81.15492.00.1**



Tea set  
Quattro 6/20  
Shape: Tulip,  
**81.15116.01.1**



Mug with saucer  
Quattro  
Shape: Leningrad, 360 ml  
**81.17615.00.1**



3 pieces set  
Quattro  
Shape: Tulip, 250 ml  
**81.14854.00.1**



Tea pot  
Quattro  
Shape: Tulip, 600 ml  
**80.03048.00.1**



Tea cup with saucer  
Quattro  
Shape: Tulip, 250 ml  
**81.14860.00.1**



Coffee cup with saucer  
Quattro  
Shape: Tulip, 140 ml  
**81.15017.00.1**



Tea set  
Golden Garden 6/20  
Shape: Tulip  
**81.11142.02.1**



Tea cup with saucer  
Golden garden  
Shape: Tulip, 250 ml  
**81.10006.00.1**



Tea pot  
Golden garden  
Shape: Tulip, 600 ml  
**80.00007.00.1**



Tea set  
Winter evening 6/14  
Shape: Tulip  
**81.10737.08.1**



Tea cup with saucer  
Winter evening  
Shape: Tulip, 250 ml  
**81.10012.00.1**



Tea pot  
Winter evening  
Shape: Tulip, 600 ml  
**80.00018.00.1**





## CLASSIC OF ST.PETERSBURG 6/20



Tea set  
Night 6/14  
Shape: Spring  
**81.15121.01.1**



Tea set  
Bridges of St.Petersburg 6/20  
Shape: Banquet  
**81.25123.00.1**



Tea set  
Classic of St.Petersburg 6/20  
Shape: Banquet  
**81.25120.00.1**



Dinner set  
Classic of St.Petersburg 6/24  
Shape: European - 2  
**81.25800.00.1**





Tea set  
Cocoon 6/20  
Shape: Spring  
**81.20884.00.1**



Tea set  
Singing garden 6/22  
Shape: Marquee  
**81.13874.00.1**



Sugar bowl  
Singing garden  
Shape: Marquee  
**80.00647.00.1**



Tea pot  
Singing garden  
Shape: Marquee, 1100 ml  
**80.00646.00.1**



3 pieces set  
Singing garden  
Shape: Marquee, 230 ml  
**81.13448.00.1**



Tea cup with saucer  
Singing garden  
Shape: Marquee, 230 ml  
**81.10298.00.1**



Tea cup with saucer  
Spring Arches  
Shape: Spring, 230 ml  
**81.10229.00.1**



Tea cup with saucer  
Spring Night  
Shape: Spring, 230 ml  
**81.15138.00.1**



Tea cup with saucer  
Spring Todes  
Shape: Spring, 230 ml  
**81.14748.00.1**



3 pieces set  
Todes  
Shape: Spring, 230 ml  
**81.14823.00.1**



3 pieces set  
Bluebells  
Shape: Radial, 250 ml  
**81.10521.00.1**



Tea cup with saucer  
Bluebells  
Shape: Radial, 250 ml  
**81.10520.00.1**



Tea cup with saucer  
Grouses  
Shape: Radial, 250 ml  
**81.10920.00.1**



Cup with saucer  
Garnet gold  
Shape: Gift, 375 ml  
**81.19177.00.1**



Cup with saucer  
Serpentine  
Shape: Classic, 360 ml  
**81.14776.00.1**



Mug with saucer  
Helicopter  
Shape: Leningrad, 360 ml  
**81.10494.00.1**



Mug with saucer  
Kiji  
Shape: Leningrad, 360 ml  
**81.10496.00.1**



Mug with saucer  
Birds  
Shape: Leningrad, 360 ml  
**81.10493.00.1**



Mug with saucer  
Cobalt stripes  
Shape: Leningrad, 360 ml  
**81.14856.00.1**



Mug with saucer  
Bells  
Shape: Leningrad, 360 ml  
**81.15204.00.1**



Mug with saucer  
Frosty day  
Shape: Leningrad, 360 ml  
**81.10490.00.1**



Gift set mug with saucer  
Kalevala  
Shape: Leningrad 2, 360 ml  
**81.26538.00.1**



Gift set mug with saucer  
Morioka  
Shape: Leningrad 2, 360 ml  
**81.26540.00.1**



Gift set mug with saucer  
Yukata  
Shape: Leningrad 2, 360 ml  
**81.26539.00.1**



Gift set mug with saucer  
Okinawa  
Shape: Leningrad 2, 360 ml  
**81.26537.00.1**



## WHITE GOLD COLLECTION

The Imperial Porcelain Manufactory is the leading enterprise in Russia that manufactures products of egg-shell bone china. Items made of this material are exceptionally light, amazingly fine, almost transparent, but at the same time characteristically strong owing to the special composition. They have gentle white color and produce a surprisingly melodic sound when tapped slightly upon. Bone china made with an exclusive technology developed by the factory's engineers is much finer and whiter than many world counterparts, so it quickly took the leading position in the porcelain market.

### UNIQUE PRODUCT TECHNOLOGY

In 1980, the USSR State Prize in Science and Technology was awarded to the LPM for development of a unique technology and organization of bone products industrial manufacturing

### EXCLUSIVITY

Imperial Porcelain Manufactory is the leading production in Russia that produces thin-walled bone china

### TRANSPARENCY AND WHITENESS

Special porcelain mixture formula makes this type of porcelain ivory white and very fine







Tea set  
Golden edging 6/20  
Shape: Wave  
**81.20892.00.1**



Tea cup with saucer  
Golden edging  
Shape: Wave, 155 ml  
**81.13549.00.1**



Coffee set  
Golden rim 6/20  
Shape: Classic-2  
**81.14598.00.1**



Cup with saucer  
Golden edging  
Shape: Classic №2, 160 ml  
**81.13881.00.1**



Tea set  
Golden rim 6/14  
Shape: Cupola  
**81.21490.00.1**



Tea cup with saucer  
Golden edging  
Shape: Cupola, 300 ml  
**81.16430.00.1**



Tea set  
Golden rim 6/20  
Shape: Apple  
**81.21494.00.1**



Tea cup with saucer  
Golden edging  
Shape: Apple, 160 ml  
**81.15349.00.1**



Coffee set  
Golden rim 6/15  
Shape: Julia  
**81.17852.00.1**



Cup with saucer  
Golden edging  
Shape: coffee Julia, 145 ml  
**81.17853.00.1**



Tea set 6/14  
Golden ribbon  
Shape: Julia  
**81.23999.00.1**



Cup with saucer  
Golden ribbon  
Shape: coffee Julia, 210 ml  
**81.23998.00.1**



Tea set 6/14  
Golden ribbon  
Shape: Isadora  
**81.25243.00.1**



Cup with saucer tea  
Golden ribbon  
Shape: Isadora, 250 ml  
**81.17862.00.1**



8 pieces set  
Gallante 2/8  
Shape: Classic №2, 160 ml  
**81.13781.00.1**



Cup with saucer  
Gallante  
Shape: Classic №2, 160 ml  
**81.13784.00.1**





Tea set  
Thin twigs 6/20  
Shape: Wave,  
**81.20897.00.1**



Tea cup with saucer  
November twigs with edging  
Shape: Wave, 155 ml  
**81.14403.00.1**



Tea set  
Rose net 6/20  
Shape: Wave,  
**81.20895.00.1**



Tea cup with saucer  
Rose net  
Shape: Wave, 155 ml  
**81.14621.00.1**



Tea set  
Golden Medallion 6/20  
Shape: Apple  
**81.21492.00.1**



Tea cup with saucer  
Golden Medallion  
Shape: Apple, 160 ml  
**81.19218.00.1**



Tea set  
Blooming peas 6/20  
Shape: Spring  
**81.25575.00.1**



Tea cup with saucer  
Blooming peas  
Shape: Spring, 250 ml  
**81.25574.00.1**



Cup with saucer  
Golden edging  
Shape: White flower, 200 ml  
**81.15467.00.1**



Tea cup with saucer  
Golden edging  
Shape: Apple, 160 ml  
**81.15349.00.1**



Cup with saucer  
Golden edging  
Shape: coffee Julia, 145 ml  
**81.17853.00.1**



Cup with saucer  
Golden edging  
Shape: Bilibina, 180 ml  
**81.16744.00.1**



Tea cup with saucer  
Golden edging  
Shape: Natasha, 220 ml  
**81.10503.00.1**



Tea cup with saucer  
Golden edging  
Shape: Cupola, 300 ml  
**81.16430.00.1**



Cup with saucer  
Golden edging  
Shape: Lily of valley №2, 180 ml  
**81.14287.00.1**



Cup with saucer  
Golden edging  
Shape: Bilibina, 180 ml  
**81.15455.00.1**



Cup with saucer  
Golden edging  
Shape: Twisted, 155 ml  
**81.13928.00.1**



Cup with saucer  
Golden edging  
Shape: May, 165 ml  
**81.13733.00.5**



Cup with saucer  
Golden edging  
Shape: Classic №2, 160 ml  
**81.13881.00.1**



Tea cup with saucer  
Golden edging  
Shape: Wave, 155 ml  
**81.13549.00.1**



Cup with saucer  
Golden edging  
Shape: Carnation №2, 200 ml  
**81.13929.00.1**



Cup with saucer  
Gold edging  
Shape: Breeze, 176 ml  
**81.13630.00.1**



Cup with saucer  
Golden edging  
Shape: Vertical, 68 ml  
**81.15713.00.1**



Cup with saucer  
Golden edging  
Shape: Black coffee, 80 ml  
**81.14441.00.5**





Cup with saucer  
Village on the lake  
Shape: Bilibina, 180 ml  
**81.15225.00.1**



Cup with saucer  
Tales birds  
Shape: Bilibina, 180 ml  
**81.16211.00.1**



Cup with saucer  
Vasilisa  
Shape: Bilibina, 180 ml  
**81.16131.00.1**



Tea cup with saucer  
Army Dadon  
Shape: Bilibina, 180 ml  
**81.23968.00.1**



Cup with saucer  
Neva Riverside  
Shape: Bilibina, 180 ml  
**81.16102.00.1**



Cup with saucer  
Kulich-city  
Shape: Bilibina, 180 ml  
**81.16101.00.1**



Cup with saucer  
Moscow Zlatoglavaya  
Shape: Bilibina, 180 ml  
**81.16096.00.1**



Cup with saucer  
Pavilions VDNH  
Shape: Bilibina, 180 ml  
**81.24413.00.1**



Cup with saucer  
Moscow Kremlin  
Shape: Bilibina, 180 ml  
**81.15932.00.1**



Cup with saucer  
The Fairy tale of the fishman and the fish  
Shape: Bilibina, 180 ml  
**81.24272.00.1**



Cup with saucer  
Karelia  
Shape: Twisted, 155 ml  
**81.15723.00.1**



Cup with saucer  
Spring with edging  
Shape: Twisted, 155 ml  
**81.13951.00.1**



Cup with saucer  
Chrysanthemum with edging  
Shape: Twisted, 155 ml  
**81.14121.00.1**



Cup with saucer  
Garden  
Shape: Twisted, 155 ml  
**81.14255.00.1**



Cup with saucer  
Yes and no with cobalt edging  
Shape: Lily of valley, 180 ml  
**81.16086.00.1**



Cup with saucer  
Yes and no with pink edging  
Shape: Lily of valley, 180 ml  
**81.23096.00.1**



Cup with saucer  
Yes and no with yellow edging  
Shape: Lily of valley, 180 ml  
**81.16678.00.1**



Cup with saucer  
Yes and no with red edging  
Shape: Lily of valley, 180 ml  
**81.15701.00.1**



Tea cup with saucer  
Snowfall  
Shape: Isadora, 240 ml  
**81.19773.00.1**



Tea cup with saucer  
Funny holiday  
Shape: Carnation, 200 ml  
**81.19272.00.1**



Tea cup with saucer  
Daisy  
Shape: Carnation, 200 ml  
**81.14018.00.1**



Cup with saucer  
Near stream  
Shape: Twisted, 155 ml  
**81.17864.00.1**



Cup with saucer  
Gallante  
Shape: Classic №2, 160 ml  
**81.13784.00.1**



Cup with saucer  
Forget me not  
Shape: Lily of valley, 180 ml  
**81.10781.00.1**



Cup with saucer  
Rose net  
Shape: May, 165 ml  
**81.13631.00.1**



Cup with saucer  
Dedication to Ahmatova  
Shape: May, 165 ml  
**81.10583.00.1**



Tea cup with saucer  
Meadow flowers  
Shape: Lily of the Valley, 180 ml  
**81.25573.00.1**



Tea cup with saucer  
Carnation and daffodil  
Shape: Lily of the Valley, 180 ml  
**81.25571.00.1**



Tea cup with saucer  
Paints of summer  
Shape: Lily of the Valley, 180 ml  
**81.25572.00.1**





## BALLET COLLECTION



Set tea 6/14  
Magic swan  
Shape: Isadora  
**81.26092.00.1**



Cup with saucer tea  
Magic swan - 1  
Shape: Isadora, 240 ml  
**81.26471.00.1**



Cup with saucer tea  
Magic swan - 2  
Shape: Isadora, 240 ml  
**81.26472.00.1**



3 pieces set  
Ballet «Swan Lake»  
Shape: May, 165 ml  
**81.17916.00.1**



3 pieces set  
Ballet «Petrushka»  
Shape: May, 165 ml  
**81.17662.00.1**



3 pieces set  
Ballet «The Nutcracker»  
Shape: May, 165 ml  
**81.18006.00.1**



3 pieces set  
Ballet «Schaherazade»  
Shape: May, 165 ml  
**81.17663.00.1**



3 pieces set  
Ballet «Gizel»  
Shape: May, 165 ml  
**81.17154.00.1**



3 pieces set  
Ballet «Don Quixote»  
Shape: May, 165 ml  
**81.23693.00.1**



3 pieces set  
Ballet «Cinderella»  
Shape: May, 165 ml  
**81.25406.00.1**



3 pieces set  
Ballet «Little Humpbacked Horse»  
Shape: May, 165 ml  
**81.24965.00.1**



3 pieces set  
Ballet «Romeo and Juliet»  
Shape: May, 165 ml  
**81.21564.00.1**



Tea cup with saucer  
Dance  
Shape: Petropolis, 220 ml  
**81.19122.00.1**



Tea cup with saucer  
Firebird  
Shape: Petropolis, 220 ml  
**81.19123.00.1**





## SCARLETT

### BONE CHINA PORCELAIN

NEW



5 pieces set  
Scarlett - 2  
Shape: Standard - 2  
**81.27041.00.1**



Cup with saucer  
Scarlett - 1  
Shape: Idyll, 250 mm  
**81.26830.00.1**



Cup with saucer  
Scarlett - 2  
Shape: Idyll, 250 mm  
**81.26831.00.1**

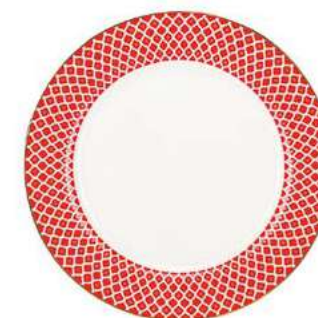


Plate flat  
Scarlett - 1  
Shape: Standard - 2, 270 mm  
**80.93390.00.1**



Plate flat  
Scarlett - 2  
Shape: Standard - 2, 270 mm  
**80.93391.00.1**



Plate deep  
Azur gold  
Shape: Standard - 2, 235 mm  
**80.93400.00.1**



Plate flat  
Azur gold  
Shape: Standard - 2, 200 mm  
**80.93401.00.1**



Plate flat  
Scarlett  
Shape: Standard - 2, 200 mm  
**80.93396.00.1**



Gift set  
Scarlett - 1  
Shape: Idyll, 250 mm  
**81.26830.00.1**



Gift set  
Scarlett - 2  
Shape: Idyll, 250 mm  
**81.26831.00.1**





# AZUR

## BONE CHINA PORCELAIN

NEW



5 pieces set  
Azur - 1  
Shape: Standard - 2  
**81.27040.00.1**



Cup with saucer  
Azur - 1  
Shape: Idyll, 250 mm  
**81.26828.00.1**



Cup with saucer  
Azur - 2  
Shape: Idyll, 250 mm  
**81.26829.00.1**

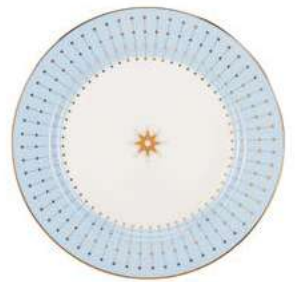


Plate flat  
Azur  
Shape: Standard - 2, 200 mm  
**80.93399.00.1**



Plate flat  
Azur - 2  
Shape: Standard - 2, 270 mm  
**80.93398.00.1**



Plate flat  
Azur - 1  
Shape: Standard - 2, 270 mm  
**80.93397.00.1**



Plate flat  
Azur gold  
Shape: Standard - 2, 200 mm  
**80.93401.00.1**



Plate deep  
Azur gold  
Shape: Standard - 2, 235 mm  
**80.93400.00.1**



Gift set  
Azur - 1  
Shape: Idyll, 250 mm  
**81.26832.00.1**



Gift set  
Azur - 2  
Shape: Idyll, 250 mm  
**81.26833.00.1**



## TRADITIONAL COLLECTION

The Traditional Collection represents the very best of Russian design in porcelain - works of the «golden age» of the Soviet Lomonosov Manufactory 1940-1980's, widely recognized in Russia and abroad, including international exhibitions of art and industry. It consists of porcelain works with the variety of decorative patterns, which perfectly suite their shapes.

### CLASSIC SHAPES

Synthesis of high quality and sophisticated taste

### DECORATION RICH CHOICE

Classic, floral, and graphic painting created by artists at various times

### VARIETY IN DESIGN

High-minded production decorating daily life







Tea set  
Net-Blues 6/20  
Shape: Youth  
**81.24872.00.1**



Tea set  
Net-Blues 6/20  
Shape: Tulip  
**81.24815.00.1**



Tea pot small size  
Net-Blues  
Shape: Tulip, 600 ml  
**80.86209.00.1**



Tea cup with saucer  
Net-Blues  
Shape: Tulip, 250 ml  
**81.24812.00.1**



Jam saucer  
Net-Blues  
Shape: Tulip, 98 mm  
**80.50238.00.1**



3 pieces set  
Net-Blues  
Shape: Youth, 200 ml  
**81.24870.00.1**



Tea pot  
Net-Blues  
Shape: Youth, 500 ml/1200 ml  
**80.86486.00.1 / 80.62934.00.1**



Sugar bowl  
Net-Blues  
Shape: Youth, 200 ml  
**80.86485.00.1**



Cup with saucer  
Net-Blues  
Shape: Youth, 200 ml  
**81.24869.00.1**



Mug with saucer  
Net-Blues  
Shape: Leningrad, 360 ml  
**81.24769.00.1**



Gift set  
Net-Blues  
Shape: Solo  
**81.25619.00.1**



Gift Set  
Bordo net  
Tablecloth square, 145x145/145x220  
**14.01144.02 / 14.01145.02**



Dinner set  
Net-blues 2 6/24  
Shape: Youth  
**81.26393.00.1**



Oval dish for fish  
Net-Blues  
Shape: Youth, 280 mm  
**80.82281.00.1**



Oval dish  
Net-Blues  
Shape: Youth, 280 mm  
**80.82280.00.1**



Small plate  
Net-Blues  
European №2, 215 mm  
**80.85412.00.5**



Small plate  
Net-Blues 2  
European №2, 270 mm  
**80.85411.00.1**



Salad bowl 1 person  
Net-Blues  
Shape: Youth, 170 ml  
**80.50645.00.1**



Salad bowl 2 person square  
Net-Blues  
Shape: Youth, 350 ml  
**80.82279.00.1**



Salad bowl 6 person  
Net-Blues  
Shape: Youth, 1500 ml  
**80.50250.00.1**



Butter dish with cover  
Net-Blues  
Shape: Rectangular, 100x172x155  
**80.50245.00.1**



Gravy boat  
Net-Blues  
Shape: Youth, 100 g  
**80.50241.00.1**



Gravy boat  
Net-Blues  
Shape: Youth, 200 g  
**80.50242.00.1**



Cup with saucer  
Net-Blues  
Shape: Youth, 170 ml  
**81.15593.00.1**



Covered cup with saucer tea  
Net-Blues  
Shape: Gift №2, 250 ml  
**81.26643.00.1**





Tea set  
Pink Tulips 6/20  
Shape: Tulip  
**81.20955.00.1**



Tea pot  
Pink tulips  
Shape: Tulip, 600 ml  
**80.00028.00.1**



Tea cup with saucer  
Rose tulips  
Shape: Tulip, 250 ml  
**81.10016.00.1**



Tea set  
White 6/20  
Shape: Tulip  
**81.14790.06.1**



Tea pot  
White  
Shape: Tulip, 600 ml  
**80.06881.00.1**



Tea cup with saucer  
White  
Shape: Tulip, 250 ml  
**81.13902.00.1**



Tea set  
Golden grass 6/14  
Shape: Tulip  
**81.20940.00.1**



Tea pot  
Golden grass  
Shape: Tulip, 600 ml  
**80.00096.00.1**



Tea cup with saucer  
Golden grass  
Shape: Tulip, 250 ml  
**81.10039.00.1**



Tea cup with saucer  
Golden Camomiles  
Shape: Tulip, 250 ml  
**81.14667.00.1**



Tea cup with saucer  
Forest violet  
Shape: Tulip, 250 ml  
**81.10119.00.1**



Tea cup with saucer  
Laurencia  
Shape: Kostroma, 300 ml  
**81.23920.00.1**



Tea set  
Lunar 6/20  
Shape: Tulip  
**81.20946.00.1**



Tea cup with saucer  
Moon  
Shape: Tulip, 250 ml  
**81.10024.00.1**



3 pieces set  
Lunar  
Shape: Tulip, 250 ml  
**81.10968.00.1**



Tea pot  
Moon  
Shape: Tulip, 600 ml  
**80.00052.00.1**



Cake dish  
Lunar  
Shape: Tulip  
**80.00056.00.1**



Tea set  
My garden 6/20  
Shape: Tulip  
**81.20948.00.1**



Tea cup with saucer  
My garden  
Shape: Tulip, 250 ml  
**81.16839.00.1**



Cup with saucer  
Love  
Shape: Gift, 375 ml  
**81.10954.00.1**



Cup with saucer  
Nadejda  
Shape: Gift, 375 ml  
**81.10950.00.1**



Cup with saucer  
Chokeberry  
Shape: Gift, 375 ml  
**81.10646.00.1**





Tea set  
Moscow river metallik 6/20  
Shape: Heraldic  
**81.23947.00.1**

Tea cup with saucer  
Moscow river metallik  
Shape: Heraldic, 220 ml  
**81.23959.00.1**



Duinner set  
Moscow river metallik 6/24  
Shape: European-2  
**81.25797.00.1**



Tea set  
Antique 6/14  
Shape: Heraldic  
**81.24412.00.1**



Tea cup with saucer  
Antique  
Shape: Heraldic  
**81.24411.00.1**



Dinner set  
Antique 6/24  
Shape: European - 2  
**81.25764.00.1**



Tea set  
Moscow river metallik 6/20  
Shape: Heraldic  
**81.20900.00.1**

Tea cup with saucer  
Moscow river metallik  
Shape: Heraldic, 220 ml  
**81.20826.00.1**



Dinner set  
Nephrite Background 6/24  
Shape: European - 2  
**81.25798.00.1**



Mug with saucer  
Troika  
Shape: Leningrad, 360 ml  
**81.10486.00.1**



Mug with saucer  
Birches  
Shape: Leningrad, 360 ml  
**81.11008.00.1**



Mug with saucer  
Brigantine  
Shape: Leningrad, 360 ml  
**81.11000.00.1**



Mug with saucer  
Na nerli  
Shape: Leningrad, 360 ml  
**81.10491.00.1**



## ANIMALISTIC SCULPTURE COLLECTION

The collection consists of domestic and wild images animals created in the naturalistic manner. It is made up of works created by famous sculptors and animalists: Boris Vorobyev, Pavel Veselov, and Ivan Riznich, whose works took high honours at international exhibitions. The entire sculpture is made to the original techniques by hand and decorated with underglaze painting.

### HAND CASTING

Hand-made sculptures out of soft or hard porcelain

### REALISTIC DEPICTION

Expression of the beauty, grace and power in the animalistic form

### UNDERGLAZED PAINTING

Sculptures painted by hand in underglazed technique







Sculpture  
Polar bear walking  
245x430x155  
**82.00998.00.1**



Sculpture  
Polar bear sitting  
255x270x180  
**82.00977.00.1**



Sculpture  
Bear - cub lying  
116x123x74  
**82.00976.00.1**



Sculpture  
Bear with cub  
40x90x60  
**82.75065.00.1**



Sculpture  
Vesti  
73x88x36  
**82.61763.00.1**



Sculpture  
Greyhound dog  
113x173x115  
**82.00978.00.1**



Sculpture  
Fox  
117x73x47  
**82.01045.00.1**



Sculpture  
Yorkshire Terrier  
72x81x36  
**82.70766.00.1**



Sculpture  
Persian cat Tafiniya  
91x96x45  
**82.84949.00.1**



Sculpture  
Persian cat Patricia  
91x96x45  
**82.84950.00.1**



Sculpture  
Siamese Kitten «Paramosha»  
59x58x39  
**82.50503.00.1**



Sculpture  
Brown bear  
138x192x122  
**82.04678.00.1**



Sculpture  
Chihuahua Xorxe  
73x75x30  
**82.79499.00.1**



Sculpture  
Chihuahua playing Chara  
54x80x33  
**82.83950.00.1**



Sculpture  
Dachshund, large size  
114x138x72  
**82.01005.00.1**



Sculpture  
Labrador Chocolate  
90x150  
**82.77333.00.1**



Sculpture  
Foal grazing  
190x245x80  
**82.01960.00.1**



Sculpture  
Foal grazing, brown Sorrel  
190x245x80  
**82.01961.00.1**



Sculpture  
Moose  
246x121x369  
**82.07106.00.1**



Sculpture  
Fallow-deer with horns  
290x248x117  
**82.00993.00.1**



Sculpture  
Hedgehog  
79x80x62  
**82.01072.00.1**



Sculpture  
Giraffe-calf  
132x126x70  
**82.01068.00.1**



Sculpture  
Zebra-calf lying  
75x96x67  
**82.01034.00.1**



Sculpture  
Irish setter  
98x226x60  
**82.01071.00.1**



Sculpture  
Bird Lazorevka  
72x96x45  
**82.78548.00.1**



Sculpture  
Bullfinch big  
95x119x68  
**82.78550.00.1**



Sculpture  
Goldfinch Black  
90x300  
**82.80524.00.1**



Sculpture  
Bird - Magpie  
248x125x87  
**82.00963.00.1**



Sculpture  
Crossbill White-winged  
110x70x120  
**82.80839.00.1**



Sculpture  
Poodle  
148x90x55  
**82.00999.00.1**



Sculpture  
Pug standing Archi  
67x87x43  
**82.80300.00.1**



Sculpture  
Pug lying  
40x95x40  
**82.79496.00.1**



## RUSSIAN STYLE COLLECTION

The collection represents the stylization of the national art created by Russian artists of the late XIX — early XX centuries, unique and original works belonging to artists of the Soviet period — Alexei Vorobyevsky who seamlessly weaves the themes and images of the Russian folk tradition into the art of porcelain, variations on folk images and ornaments of contemporary artists.

### FINE HAND PAINTING

Miniature and delicate decoration based on Russian patterns

### AUTHENTIC RUSSIAN MOTIFS

Traditional Russian motifs are being found in peasant crafts such as lubok (painted wood-work), and in old folklore

### EXQUISITE STYLE

Filigreed precision of porcelain calligraphy







Tea set  
National ornaments 6/20  
Shape: Spring,  
**81.20885.00.1**



Tea pot  
Folk Pattern  
Shape: Spring, 2000 ml  
**80.60810.00.1**



Tea pot  
Folk Pattern  
Shape: Spring, 800 ml  
**80.60809.00.1**



Sugar bowl  
Folk Pattern  
Shape: Spring, 400 ml  
**80.60811.00.1**



Tea cup with saucer  
Folk Pattern  
Shape: Spring, 250 ml  
**81.18073.00.1**



Tea pot  
National motives  
Shape: Samovar, 480 ml  
**80.00788.00.1**



Tea pot  
Cockerels  
Shape: Baby, 300 ml  
**80.00783.00.1**



Cup with saucer  
Two roosters  
Shape: Gift, 375 ml  
**81.10642.00.1**



Covered cup with saucer tea  
Souvenir 1/3  
Shape: Gift №2, 250 ml  
**81.10319.00.1**



Mug with saucer  
Red rooster  
Shape: Leningrad, 360 ml  
**81.25772.00.1**



Tea cup with saucer  
Red cockerels  
Shape: Spring, 230 ml  
**81.15902.00.1**



Tea cup with saucer  
Red horse  
Shape: Spring, 230 ml  
**81.15308.00.1**



Tea set  
Russian Lubok 6/20  
Shape: Tulip  
**81.20958.00.1**



Tea pot small  
Russian Lubok  
Shape: Tulip, 600 ml  
**80.05730.00.1**



Decanter  
Lion Red  
Shape: 380 ml  
**80.00798.00.1**



Decanter  
Sound effect Kumanets  
Shape: 550 ml  
**80.00796.00.1**



Decanter  
Red Rooster  
Shape: Family  
**80.55902.00.1**



Decanter  
Fire bird  
Shape: Fire bird, 800 ml  
**80.00795.00.1**



Tea pots set  
Red horse  
Shape: Novgorod  
**81.10353.00.1**



Tea pot  
Red horse  
Shape: Novgorod, 2450 ml  
**80.00765.00.1**



Tea pot  
Red horse  
Shape: Novgorod, 250 ml  
**80.00766.00.1**



Plate decorative  
Red horse  
Ellipse, 195 mm  
**80.89344.00.1**



Tea pots set  
Red Rooster  
Shape: Family  
**81.10357.00.1**



Tea pot  
Red Rooster  
Shape: Family, 250 ml  
**80.00774.00.1**



Tea pot  
Bright day  
Shape: Samovar, 480 ml  
**80.00789.00.1**



64

## ARTISTIC HAND-PAINTED COLLECTION

The Imperial Porcelain Manufactory has always been a place where famous painters and sculptors were trained and groomed in full accordance with noble artistic traditions and has been produced custom porcelain items. Before the revolution of 1917, first of all, these the orders of the Russian Imperial court to produce and complete the existing sets and items for interior decoration of imperial residences. Throughout the XX century the factory implemented governmental orders and orders for large corporations, diplomatic gifts, produced sets for official receptions in honor of the significant events in Russian history. At the beginning of XXI century, the factory began to produce a replica of the most significant works made in XVIII-XIX centuries.

### UNIQUE HANDCRAFT

Porcelain works of superb artistry created by great porcelain painters of our time

### LUXURIOUS SETS

Original designs of Imperial porcelain masterpieces

### HISTORICAL REPLICAS

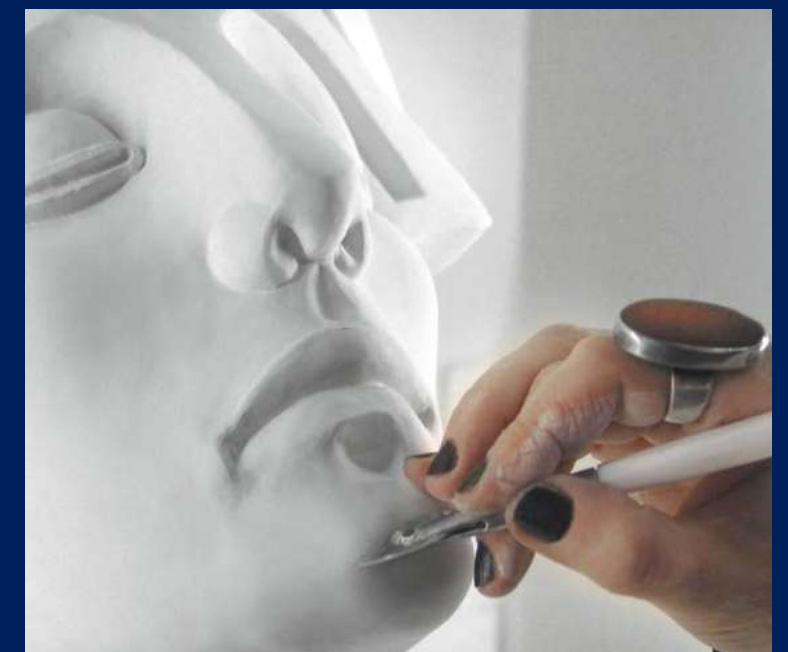
Exact copies of the Russian porcelain produced in the XIII - XX centuries

### 24-CARAT GOLD

Hand-made gold painting



Today manufactured products represent the variety of stylistic and artistic solutions, technologies and ways of dressing, having been accumulated in the art of porcelain for three centuries. The range of the manufacture is a replica of works performed for the Russian imperial residences, originals are kept in the State Hermitage Museum and other museum collections. We continue our tradition of producing unique, highly artistic custom porcelain.



HAND-PAINTED





“GOLDEN”

SHAPE: ALEXANDRIA



Tea set  
Gold 52% 6/20  
Shape: Alexandria  
**81.25211.00.1**



Dinner set  
Gold 52% 6/24  
Shape: European - 2  
**81.25212.00.1**



Cup with saucer  
Gold 52%  
Shape: Alexandria, 240 ml  
**81.19203.00.1**



The armorial set was commissioned in 1827 by Tsar Nicolas I for Pavlovsk Palace, the residence of the tsar's mother, the Dowager Empress Maria Fyodorovna (wife of Paul I). It comprised 240 plates and 48 oval dishes, with a depiction of the coat of arms of Nicholas I of the centre of each item. All the pieces were decorated with green borders, surmounted with a delicate and elaborate Empire gold pattern. The abundance of gold gave this service its other name — Golden Service. The original set is displayed in the State Hermitage.

Hard Porcelain, hand-cast according to the original technique.  
Overglaze hand painting. Gold





## “COTTAGE”

SHAPE: ALEXANDRIA



Tea Set  
Cottage 6/20  
Shape: Alexandria  
**81.20867.00.1**



Dinner Set  
Cottage 6/24  
Shape: European - 2  
**81.26749.00.1**



Cup with saucer  
Gold 52%  
Shape: Alexandria, 240 ml  
**81.19203.00.1**

The set was originally manufactured during the years 1827-1829 at the Imperial Porcelain Manufactory for the small Cottage Palace at Peterhof, the private residence of Tsar Nicolas I and his wife Alexandra Fedorovna (hence the name of the shape —Alexandria).

The palace itself was designed by the Scottish architect Adam Menelaws in Neo-Gothic style. The service was designed to coordinate with the interior decor of the palace. All the items are emblazoned with the coat of arms of Alexandria, and the motto “For Faith, Tsap and Fatherland”. The original service is displayed in the State Hermitage.

Hard Porcelain, hand-cast according to the original technique.  
Overglaze hand painting. Gold





## “RECOLLECTION”

SHAPE: ALEXANDRIA



Tea Set  
Recollection 6/20  
Shape: Alexandria  
**81.25269.00.1**



Dinner Set  
Recollection 6/24  
Shape: European - 2  
**81.25801.00.1**



3 pieces set  
Recollection  
Shape: Alexandria, 240 ml  
**81.20859.00.1**



This shape was first created at the Imperial Porcelain Manufactory at the beginning of the XIX century, for the Peterhof Cottage Palace, built in Neo-Gothic style by the Scottish architect Adam Menelaws, as the private residence of Empress Alexandra Fedorovna, wife of Nicolas I. The artist Bogdanova decorated this famous porcelain shape with refined and elegantly costumed figures. The decorative table objects of the service were painted with magnificent flower bouquets, friezes and discrete dahlias and roses, composed in rectangular locket and set off with a rich gold decor. The classical composition is harmoniously combined with the ancient motifs of particularly in the predominance purple and gold painting which give regal splendor to this gala service. The gold filigree ornament is accentuated with semiprecious agate.

Hard Porcelain, hand-cast according to the original technique.  
Overglaze hand painting. Gold.





## “ROCOCO”

SHAPE: ALEXANDER III



Tea set  
Rococo 6/14  
Shape: Alexander III  
**81.24942.00.1**



Cup with saucer  
Rococo  
Shape: Alexander III, 360 ml  
**81.24941.00.1**

The Imperial Porcelain Manufactory flourishing era of the first third of the XIX century, when the factory produced large ceremonial sets for the palaces of the House of Romanov is reflected in this service.

The set shape "Alexander III" was restored at the Imperial Porcelain Manufactory in 2013 with slight changes in proportions from the original of the latter half the XIX century, exhibited in the State Hermitage. For the first time an ensemble in the style of neorokoko was developed at the factory in 1866. The occasion was the wedding of the Grand Duke and heir Alexander Alexandrovich and Danish princess Dagmara. Service set intended for Anichkov Palace, the official residence of the heir.

Hard porcelain. Hand moulding. Hand overglaze painting. Gold.





## “FANTASTIC BUTTERFLIES”

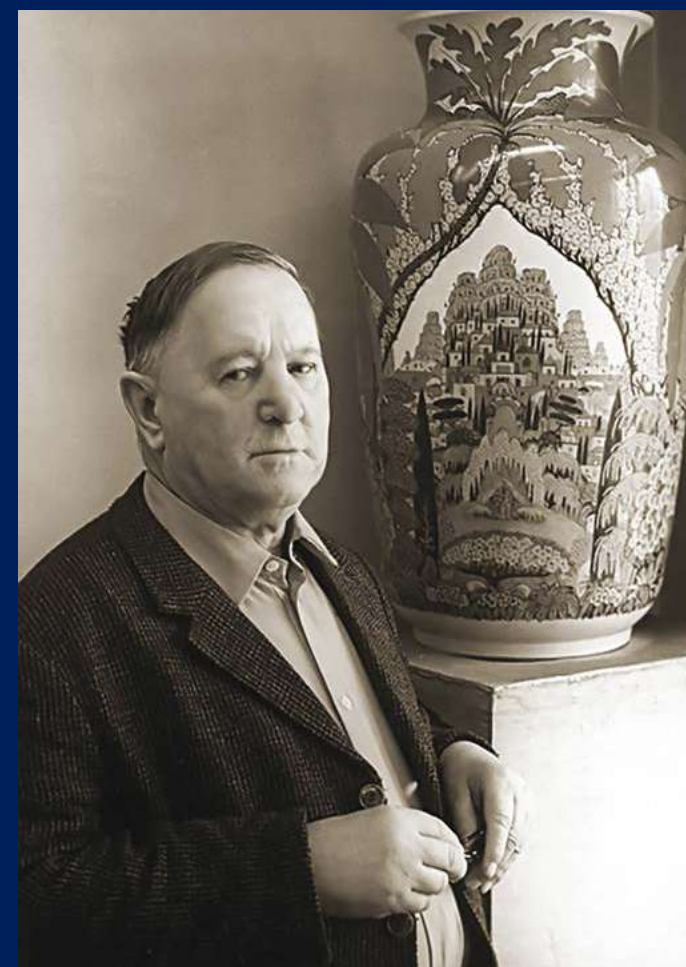
SHAPE: NATASHA



Coffee Set  
Fantastic butterflies 6/14  
Shape: Natasha  
81.21238.00.1



Tea set  
Fantastic butterflies 6/30  
Shape: Natasha  
81.15141.00.1



Anna Nosova, who designed the «Fantastic butterflies» pattern, worked for many years alongside Alexei Vorobyevsky. She meticulously studied his artistic style, masterfully copying his fairytale pictures with the filigreed precision of porcelain calligraphy. Anna Nosova based her «Fantastic butterflies» on the motifs of Vorobyevskiy, preserving all the warmth, the luscious palette and ornament of his works.

Fine bone China. Hand moulding. Hand overglaze painting. Gold.  
Author A. Nosova after A. Vorobyevsky's patterns





## “GOLDEN TWIGS”

SHAPE: CLASSIC-2



Coffee Set  
Golden twigs 6/20  
Shape: Classic-2  
**81.13869.00.1**



Cup with saucer  
Golden twigs  
Shape: Classic-2, 160 ml  
**81.13873.00.1**



Anna Nosova had an opportunity to learn from artist Alexey Vorobyevsky as she was working together with him for several decades. The tea set "Golden twigs" - an exquisite set in which Anna Nosova managed to preserve the bright colour palette and the warm and highly decorative atmosphere that are typical for Alexey Vorobyevsky's masterpieces.

Fine bone China. Hand moulding. Hand overglaze painting. Gold.  
Author A. Nosova after A. Vorobyevsky's patterns





Tea set  
Landscape Frieze 6/15  
Shape: Apple  
81.14525.01.1



Cup with saucer  
Landscape frieze  
Shape: Apple  
81.15456.00.1



Vorobyevsky never used preliminary sketches, he just painted on "a clean slate" no matter how sophisticated the picture was. His delicate painting style would start with fine feather sharp pen lines of the general contour of the picture and then he would use a pen or the finest brush to fill up contours with multi-colored paints as if it were a mosaics panel. The artist had an immaculate feeling of balance harmony between fine bone china and decor, his decorations invariably enhance and underline almost airy, delicately thin fragility of porcelain surface.

## "LANDSCAPE FRIEZE"

SHAPE: APPLE

Fine bone China. Hand moulding. Hand overglaze painting. Gold.  
Author A. Vorobyevsky.





## “RUSSIAN BALLET”

SHAPE: VERTICAL



Coffee Set  
Russian ballet 6/22  
Shape: Vertical  
**81.14263.00.1**



The author's unfulfilled dream of becoming a theater art decorator permeates all his works. He liked to create reminiscences on Diaghilev's «Russian seasons» ballet shows. Vorobyevsky's whimsical, fantastic images do frequently resemble a set for a theatrical production. Some of the artist's creations, for example coffee set «Russian ballet» were literally inspired by theatrical productions. Vorobyevsky depicted his imaginary theater.

Considerable part of this collection is represented by works of A.Vorobyevsky, a talented illustrator of Russian soul. He came to LFZ in 1926 and worked there till he died in 1992 having created more than 1500 pictures and patterns during his long and successful tenure. When he was young Vorobyevsky dreamed He liked to create reminiscences on Diaghilev's "Russian seasons" ballet shows. Vorobyevsky depicted his imaginary theater and he was a show-director, costume designer, scene decorator and director of the company there. This is why all the actors are so beautifully cast. Vorobyevsky's "Porcelain lubok" is always a world of bright red and blue colors. Lubok aesthetics is predicated by Russian folk-lore: Russian fairs, towers, samovars, carousels, red-gold cockerels, fairy-tale flowers, Punch-and-Judy shows, golden horses, sarafan patterns. Vorobyevsky loved to bask in this kaleidoscope of folk Russian images. Vorobyevsky won gold medals for "Porcelain Russian lubok", "Russian folk patterns" at the World Exhibition Fair in Brussels in 1958

Fine bone China. Hand moulding. Hand overglaze painting. Gold.  
Author A. Vorobyevsky





## SCULPTURE



"Bayadere.U.Lopatkina" White  
Hand-made moulding  
**82.86752.00.1**



"Bayadere.U.Lopatkina" Bayadere  
Hand-made moulding  
**82.86753.00.1**



"Russian. W. Lopatkina" White  
Hand-made moulding  
**82.86754.00.1**



"Russian. W. Lopatkina" White  
Hand-made moulding  
**82.86755.00.1**





Girl in ballet tutu White  
Hand-made moulding  
82.91161.00.1



Girl in pointe-shoes White  
Hand-made moulding  
82.91483.00.1



"Karsavina" White  
Hand-made moulding  
82.01714.00.1



"Ulanova" White  
Hand-made moulding  
82.09373.00.1



"Horse English-Arabic" White  
Hand-made moulding  
81.18629.00.1



"Friesian horse" White  
Hand-made moulding  
81.18591.00.1



"Horse Arabic" White  
Hand-made moulding  
81.18628.00.1



"Horse Akhal-Teke" White  
Hand-made moulding  
82.62080.00.1





CUPS WITH SAUCER



Cup with saucer  
Gifts of the East  
Shape: Black coffee, 80 ml  
81.14682.00.1



Cup with saucer  
Winter day  
Shape: Black coffee, 80 ml  
81.14678.00.1



Cup with saucer  
Rose pattern  
Shape: Black coffee, 80 ml  
81.14681.00.1



Cup with saucer  
Fairy tale  
Shape: Black coffee, 80 ml  
81.14680.00.1



Cup with saucer  
Golden twigs  
Shape: Classic-2, 160 ml  
81.13873.00.1



Cup with saucer  
Golden spring  
Shape: May, 165 ml  
81.10383.00.1



Cup with saucer  
Old time architecture  
Shape: May, 165 ml  
81.10380.00.1



Cup with saucer  
Winter day  
Shape: May, 165 ml  
81.10375.00.1



Cup with saucer  
Frosty evening  
Shape: May, 165 ml  
81.10507.00.1



Cup with saucer  
Russia  
Shape: May, 165 ml  
81.10379.00.1







## DECORATIVE PLATES



Gift set decorative plate  
Gothic 1  
Mazarin, 265 mm  
81.19253.00.1



Gift set decorative plate  
Gothic 2  
European-2, 270 mm  
81.25624.00.1

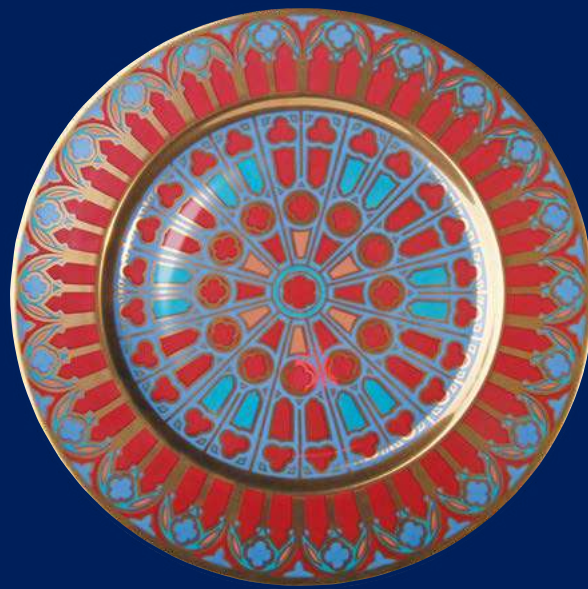


Gift set decorative plate  
Gothic 3  
European-2, 270 mm  
81.25625.00.1



Gift set decorative plate  
Gothic 4  
European-2, 270 mm  
81.25626.00.1





Gift set decorative plate  
Gothic 5  
Mazarin, 265 mm  
**81.19257.00**



Gift set decorative plate  
Gothic 6  
European-2, 270 mm  
**81.25627.00.1**



Gift set decorative plate  
Gothic 9  
European-2, 270 mm  
**81.25630.00.1**



Gift set decorative plate  
Gothic 10  
European-2, 270 mm  
**81.25590.00.1**



Gift set decorative plate  
Gothic 7  
European-2, 270 mm  
**81.25628.00.1**



Gift set decorative plate  
Gothic 8  
European-2, 270 mm  
**81.25629.00.1**



Gift set decorative plate  
Gothic 11  
European-2, 270 mm  
**81.25631.00.1**





IMPERIAL PORCELAIN  
MANUFACTORY

—✦—  
1744

[www.ipm.ru](http://www.ipm.ru)

@porcelain\_imperial  ipm\_ru  ipm.ru